



Stop! Read this manual carefully before using this product!

Please Do Not Return This Product To The Store!

For questions regarding assembly, parts, or warranty, contact our customer service department directly at 1-509-493-4938 or access product information at www.aquaglide.net.

Watersports Safety Code

Watersports are fun and challenging but involve inherent risks of injury or death. To increase your enjoyment of the sport and to reduce your risks, use common sense and follow these rules:

Before you start:

- Familiarize yourself with all applicable federal, state, and local laws, the risks inherent in the sport, and the proper use of the equipment.
- Know the waterways.
- Use caution and common sense.
- Do not use in recreational swimming pools, within 3m (10ft.) of commercial pool edge, or within 4.5m (15ft.) of boats, docks, or other hard obstructions.
- Do not attempt or allow somersaults. Landing on the head or neck can cause serious injury, paralysis or death.
- Never use at night, or in low-light conditions.
- Never use in poor weather conditions, excessive wind, waves or lightning.
- Do not use on dry land.
- Do not jump or dive from the product.
- Never swim under the product.
- Be cautious of any boat traffic or other obstructions. Ensure all users are capable swimmers and are not excessively fatigued-Do not allow anyone to attempt to swim to or from the product that are not physically able to do so.
- Always ensure that the area around the product is free of submerged logs, rocks and sandbars. Ask about the local water conditions before use.
- Only allow use of the product with proper supervision. Secure the product when not in use to prevent access by any other users.

It is the owner's responsibility to read the owner's manual and instruct all users in the safe operation of these products. By inflating these products you hereby agree to the Release of Liability, Claim Waiver, and Assumption of Risk Agreement in this manual. Please read this manual prior to inflating and using these products and keep for future reference. As with any action sport, recklessness, inexperience, misuse, or neglect of the equipment may result in serious injury or death.

Your equipment :

- Check all equipment prior to use. Inspect your product for missing, defective or worn parts. Never use the product if excessive wear or damage are detected.
- Always check for proper inflation before each use. Temperature and environmental changes can cause changes in tube pressure. Using the product over or under inflated is dangerous and can cause damage to the product, voiding the warranty.
- Always wear a properly-sized flotation vest (PFD) approved by the authorities in the country of use.

THE WARNINGS AND PRACTICES SET FORTH ABOVE IN THE WATERSPORTS SAFETY CODE REPRESENT SOME COMMON RISKS ENCOUNTERED BY USERS. THE CODE DOES NOT PURPORT TO COVER ALL INSTANCES OF RISK OR DANGER. PLEASE USE COMMON SENSE AND GOOD JUDGMENT.

Please contact us if you have any questions on the proper selection, function, or safe use of this product.

Contents:

- (A) Cascade Inflatable SUP Board
- (B) Cascade Fin with QuickPin Connector
- (C) High-Pressure, Single-Action Push Pump
- (D) Storage & Transport Bag
- (E) Repair Kit & Owner's Manual



WARNING

USE OF THIS PRODUCT AND PARTICIPATION IN WATERSPORTS INVOLVES INHERENT RISKS OF INJURY OR DEATH.

- This product should never be used by children except under adult supervision.
- Not intended for use by children under 5 years of age.
- This product is not a personal flotation device.
- Always wear a flotation vest (PFD) as required by the authorities in area of use.
- Never place wrists or feet through handles, straps or rings.
- Do not use in water less than 48" (1.2m) deep.
- Do not use within 10 ft (3.0 m) of docks, pilings, boats or other hard objects.
- Never swim under the product.
- Do not jump or dive from this product.
- Do not exceed the manufacturer's recommended number of users for your particular product.
- Do not use while under the influence of alcohol or drugs.
- Read Operator's Manual before use.

Made in China

for more information go:

Aquaglide

Cascade[™]

10'0", 10'6", 12'6" Owner's Manual

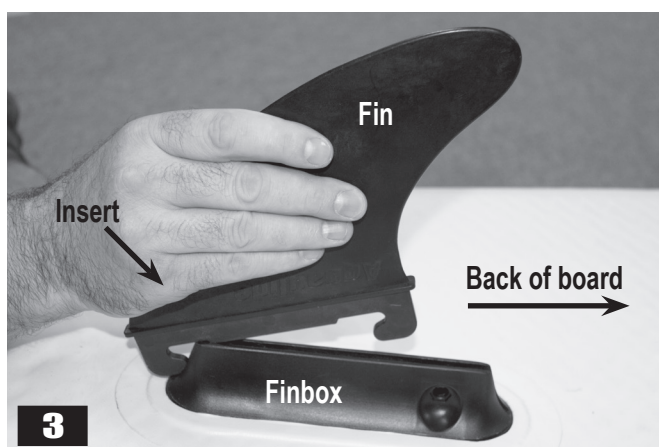
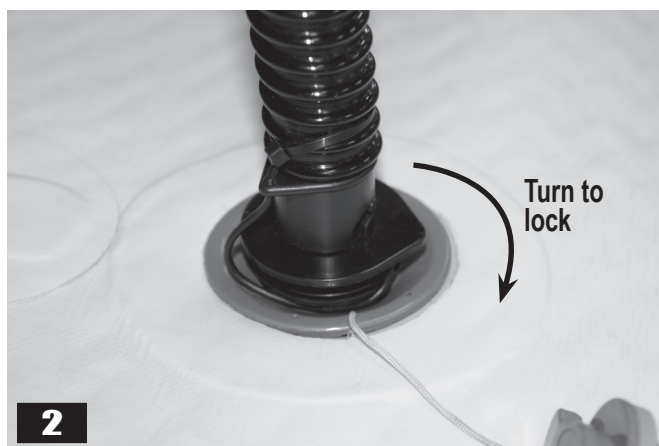
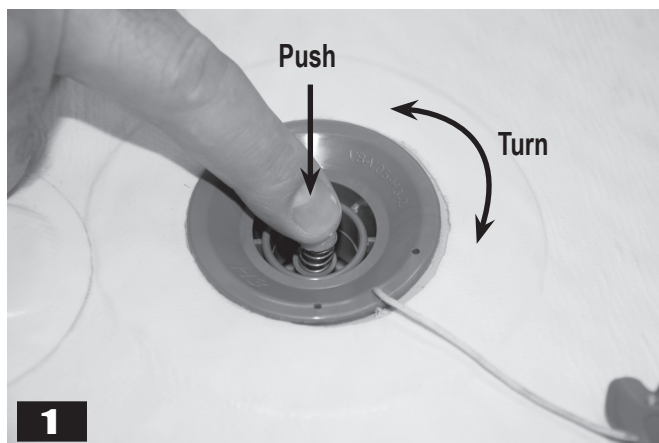
Assembly

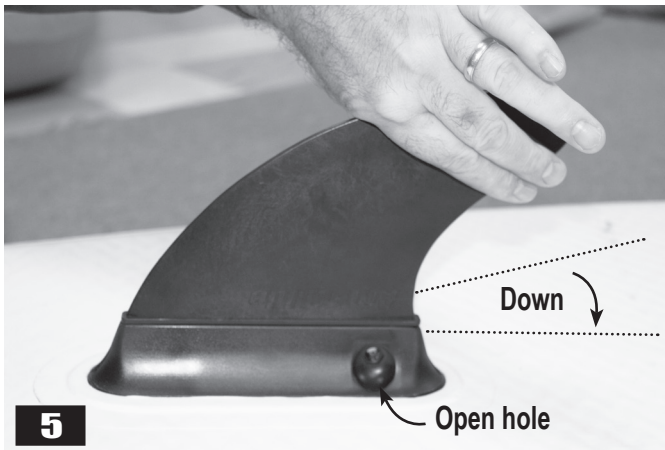
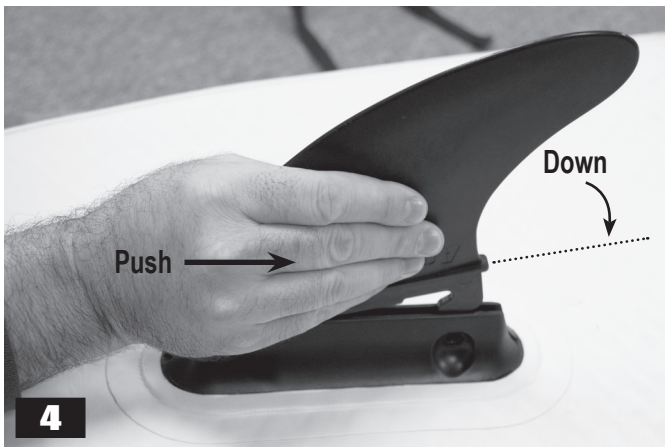
- 1) Remove the Cascade board and parts, making sure that all contents are accounted for. Unroll the board on smooth, soft ground such as grass or sand to prepare for inflation. Rocks and concrete are abrasive and may cause damage to your Cascade board, so avoid surfaces similar to these.
- 2) Prior to inflation, check the valve at the tail of the Cascade to confirm that it is set in the CLOSED (One-way) position. This will stop the air from escaping once it has been pumped into the board. Push and turn the stem at the center of the valve 45 degrees to change the valve from OPEN to CLOSED. When the stem stays locked inward, the valve is OPEN for easy deflation. From the OPEN position, push and turn the stem 45 degrees to reach the CLOSED position. The stem will 'pop' outward once the CLOSED position is reached and the valve will allow air in, but not out of the board. **See step #1.**
3. Insert the Halkey-Roberts hose fitting into the valve. Push inward firmly while twisting the fitting clockwise to lock in place. The fitting should fit very snugly so as to allow you to reach adequate air pressure. If the fitting cannot lock in place, rotate it 45 degrees and it should engage with the valve. **See step #2.**
4. Once the hose fitting is locked in place, place both feet on the pump base and both hands on the pump handle and begin pumping with smooth even strokes. **INFLATE TO 8.0 to 10.0 psi (.551 to .689 bar)** for proper stiffness and performance when being used by an adult. Heavier users will require more pressure. Once the board is properly inflated, seal the valve with the tethered valve cap by inserting and turning it counter clockwise.

NOTE: The Cascade board comes with a high-pressure push pump complete with Halkey-Roberts fitting for inflation. While it is possible to inflate the product with other pumps such as a high-powered electric inflator, we suggest using the included push pump to finish the job. This pump is designed for the high pressure required to inflate the Cascade properly, and it has the added benefit of a built-in pressure gauge. **TO REMOVE THE HOSE FITTING** you may need to press firmly inward on the fitting while turning it counter clockwise.

WARNING: DO NOT OVER-INFLATE. Over-inflation can cause permanent and/or irreparable damage to this product. Using an air compressor is the most common cause of over-inflation. **MAXIMUM acceptable pressure under any circumstances is 12.0 psi (0.827 bar)**, and should only be necessary for riders over 200 lbs (91 kg).

- 5) Before installing the fin, remove the wood spacer that comes installed in the finbox. You may want to save this piece for long-term storage.
- 6) When properly installed, the fin should 'point' toward the back of the board. First, slide the forward portion of the fin into the forward portion of the finbox **as shown in step #3.**
- 7) Once the fin base has entered the finbox, bring the back of the fin down and push the fin firmly toward the back of the board **as shown in step #4.** This will allow the fin to engage with the finbox.
- 8) Next, push the back of the fin down into the finbox **as shown in step #5.** When the fin is seated properly, the hole in the finbox should be open to accept the QuickPin. If the fin blocks this hole, retry the two previous steps until the fin is seated properly.





7) Next, install the QuickPin to secure the fin to the finbox. The properly installed fin is **shown in step #6**.

NOTE: Occasionally the finbox can become tight during transport. If this happens, use the front of the fin to open the finbox slot slightly before installing the fin. **See step #7, then proceed to step #3.**

Operation

- 1) Before each use, always check for proper air pressure, as inflatable items may loose air slowly over time and with varying temperature. Add or remove air as needed.
- 2) Always be aware of the local conditions including wind, weather, currents, and any other hazards before you go out. Use the Cascade in an area protected from the wind and boat traffic, especially when unfamiliar with your abilities and the capability of this craft.
- 3) Review any applicable rules and restrictions with your local authorities. Always be aware that the area under the Cascade may contain sharp or dangerous objects (i.e. rocks or stumps) or many other unmarked nautical hazards.
- 3) Keep a safe distance from docks, boats, boat lifts, and any other structures.
- 4) DO NOT tie the Cascade to a dock! Docks and pilings frequently contain sharp elements and/or marine growth that can puncture or damage this product.
- 4) Use common sense and good judgement when using this product. Many nautical hazards exist. By piloting this vessel, you are required to be responsible for your own safety, and the safety of those around you.

Care and Maintenance

- 1) While your product has been initially treated with UV protectant, long-term exposure to sunlight will damage the product. Regularly apply a UV protectant to the exposed surface of the tube to ensure the life of your product. We recommend using ONLY 303 UV Protectant intended for use on vinyl for this purpose. Monthly application while the product is in use is required. **NOT DOING THIS WILL VOID THE WARRANTY.** 303 UV Protectant is available at most watersports dealers, or online at www.303-products.com.
- 2) **WARNING:** Certain products, especially petroleum-based solvents, cleaners and protectants such as ArmorAll can damage the product and use of these products will void the warranty.
- 3) **WARNING:** Use of a high-pressure washer will damage the product and void the warranty. To clean, use a soft bristle brush with mild soap and fresh water. 303 UV Protectant contains a 'safe for vinyl' cleaner, and can be used to clean and protect the product at the same time.

Storage

- 1) Before storing, place the board on a clean, level area. Clean with mild soap and water and allow to dry completely. Apply 303 Protectant to the surface of the tube and spring pad cover before deflating.
- 2) Remove ALL of the air from the tube using the deflation end of the high output inflator/deflator. If some air is left in the tube, it may freeze causing cracking.
- 3) Store the board out of direct sunlight and protected from the environment in a clean, dry location. It is best to store inside a container with moth balls to prevent damage from rodents. NEVER store uncovered, in a damp location, or on a concrete surface! NEVER store at temperatures below 40 degrees F.



NOTICE! - Release of Liability, Claim Waiver, and Assumption of Risk Agreement

By opening and assembling this product, you are agreeing (1) to be bound to the terms set forth below and (2) to require anyone using this product to be bound by such terms. If you are unwilling to be bound by these terms, return this product (before use) for a full refund.

ASSUMPTION OF RISK: Use of this product and any of its components involves certain inherent risks, dangers, and hazards which can result in serious personal injury and death. In using the product, you freely agree to assume and accept any and all known and unknown risks of injury while using this equipment. The risks inherent in the sport can be greatly reduced by abiding by the Warning Guidelines listed in this Owner's Manual and by using common sense.

RELEASE AND WAIVER OF CLAIMS AGREEMENT: In consideration of the sale of the product to you, you hereby agree to the fullest extent permitted by law as follows:

TO WAIVE ANY AND ALL CLAIMS that you have or may in the future have against North Sports Inc., and Aquaglide Inc., its distributors and dealers, resulting from use of this product and any of its components.

TO RELEASE North Sports, Inc. and Aquaglide, Inc. from any and all liability for any loss, damage, injury, or expense that you or any users of this product may suffer, or that your next of kin may suffer, as a result of the use of this product, due to any cause whatsoever, including negligence or breach of contract on the part of North Sports Inc. and Aquaglide Inc. in the design or manufacture of this product and any of its components.

ARBITRATION: In further consideration of the sale to you of this product and any of its components, you hereby agree to submit to binding arbitration any and all claims which you believe you may have against North Sports Inc. and Aquaglide Inc. arising from the use of any North Sports Inc. and Aquaglide Inc. equipment or products. The arbitration shall be pursuant to the rules of the American Arbitration Association. Arbitration shall be commenced within (1) year from the date on which any alleged claim first arose. Further, the arbitration shall be held in White Salmon, Washington unless otherwise mutually agreed to by all parties. The submission to the American Arbitration Association shall be unlimited and the arbitration award may be enforced by any Court of competent jurisdiction.

BINDING EFFECT OF AGREEMENT: In the event of your death or incapacity, this Agreement shall be effective and binding upon your heirs, next of kin, executors, administrators, assigns, and representatives.

ENTIRE AGREEMENT: In entering into this Agreement, you are not relying upon any oral or written representations other than what is set forth in this agreement and the North Sports Inc. and Aquaglide Inc. Owner's Manual.

Warranty

Aquaglide, Inc. warrants products to be free of defects in material or workmanship to the original purchaser for a period of (1) year from date of purchase. This warranty is subject to the following limitations:

- 1.** Warranty is valid only with dated proof of purchase in the form of the original invoice.
- 2.** Warranty is valid only when the product is used for normal recreational and commercial activities, and does not cover use in extreme environments such as extreme whitewater or heavy surf.
- 3.** Aquaglide will make the final warranty determination which may require inspection and/or photos of the product which clearly show defect(s). We require the above be sent to another location of our choice, freight prepaid, or by email to warranty@northsports.com.
- 4.** If a product is deemed to be defective by Aquaglide, the warranty covers the repair or replacement of the defective product only. Aquaglide will not be responsible for any costs, losses, or damages incurred as a result of loss of use of product.

5. This warranty does not cover damage caused by misuse, abuse, neglect, or normal wear and tear, including, but not limited to, punctures, dragging the product over the ground, damage due to excessive sun exposure or seam failure due to overinflation in the sun, damage caused by improper handling and storage, damage caused by use in waves, whitewater or shore break, and damage caused by anything other than defects in materials and workmanship.

6. This warranty is voided if any unauthorized repair, change, or modification has been made to any part of the equipment. Authorization for such must come in writing from Aquaglide.

7. The warranty for any repaired or replacement equipment is good from the date of the original purchase only.

8. Any warranty claims must be accompanied by the original purchase receipt. The name of the retailer and date of purchase must be clear and legible.

9. There are no warranties which extend beyond the warranty specified here.

Returns and Service Policy

Product can be returned only if a return authorization number (RA) is given by Aquaglide in advance. The RA number must be on the outside of the package or it will not be accepted at our warehouse. Freight on the returned product must be prepaid or it will not be accepted. Upon receipt, Aquaglide will make a determination within (30) days. If the product is covered under warranty it will be returned to the customer at the expense of Aquaglide, Inc. after repairs can be made. If not, the customer will receive a quote for repair and/or replacement as well as any necessary cleaning and shipping charges. The customer will have 30 days to accept the quotation. At the end of 30 days, or upon refusal of the quote, Aquaglide will return the product in the condition in which it was received at the customer's expense. The customer agrees to authorize Aquaglide, Inc. to charge the customer's credit card for any costs not covered under the terms and conditions of the Aquaglide Warranty.

for more information go to: